

Windows XP User Guide

Version 1.2
August 20th, 2009

Contents

1	Introduction	3
1.1	Key Features	3
1.2	Product Tour	4
2	Installation	5
2.1	System Recommendation	5
2.1.1	Windows PC	5
2.1.2	Other Systems	5
2.2	Hardware Installation	5
2.3	Software Installation	8
2.3.1	Windows XP	8
2.3.2	Older Versions of Windows	14
3	Overture 192 Control Application	14
3.1	Fundamentals	14
3.2	Starting Up	14
3.3	System Tray Icon	15
3.4	Popup Menu	16
3.4.1	Show / Hide Overture Control	16
3.4.2	System Device Submenu	16
3.4.3	Start with Windows	17
3.4.4	Exit	17
3.5	Panels	17
3.5.1	Sample Rate Panel	18
3.5.2	Levels Panel	20
3.5.3	Control Panel	21
3.5.4	Help Panel	23
3.6	Uninstalling	24
4	Making the Most of the Overture 192	24
4.1	Cables	24
4.2	Music Player Applications	24
4.3	ASIO Compatibility	25
5	Notes	26

1 Introduction

Many thanks for your purchase of the Cantatis Overture 192 High Performance 24-bit 192kHz Audio Output Interface.

This product is one of the very highest quality audio output interfaces available, allowing your computer to become one of the best pieces of reference Hi-Fi in your home. To achieve this, we have used some state-of-the-art components and advanced designs, based on many years experience in the audio field, to create a soundcard that delivers exceptional audio performance.

Throughout the design of the Overture 192 we have endeavoured to reduce the usual complexities and instead focus on quality of performance and ease of use. We believe that everything should be simple to install, simple to configure and simple to operate, allowing you to focus on the reason for purchasing this product – the audio performance.

Sounds too good to be true? Well trust your ears, you'll be pleasantly surprised.

1.1 Key Features

The Overture 192 is the first computer audio product available with Texas Instruments Burr Brown PCM1794 Digital to Audio Converters (DACs) operating in “dual mono mode” – giving Industry leading performance, ideal for Hi-Fi purists, home studios, professional and broadcast applications.

The Burr Brown DACs and audiophile op-amps throughout give stereo analogue outputs on studio grade gold RCA connectors at up to 192kHz sample rate in fantastic detail and audio clarity.

The card also provides digital AES/EBU (S/PDIF) on both optical (TOSLINK) and co-axial (RCA) outputs at up to 192kHz to match pro-audio systems. The sample rate is software selectable to consumer standards including 44.1kHz, 48kHz, 96kHz and 192kHz thereby giving certainty of system compatibility.

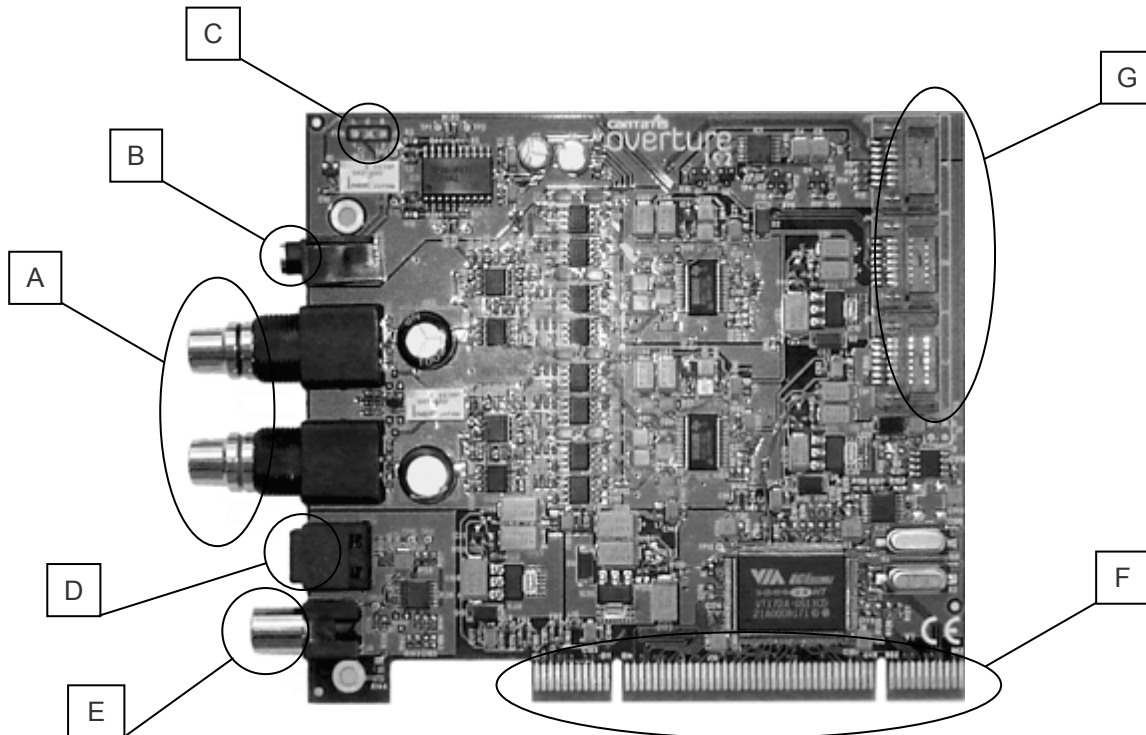
The Overture 192 also provides a specialist headphone amplifier circuit designed to suit the widest range of headphone types (30Ω to 600Ω) giving distortion and noise free listening via a 3.5mm jack socket and pin header for internal PC connection to a front panel headphone socket.

The Overture 192 is PCI v2.2 compliant and comes with WDM drivers for Microsoft Windows® 98SE, 2000, XP and Vista. The drivers may function in other operating systems – see our website for additional details.

The Windows drivers are ASIO 2.0 compatible, allowing use with suitable software.

A simple, intuitive control application avoids additional digital processing in the signal path for the ultimate ease of use.

1.2 Product Tour



A. Analogue Left / Right RCA Connectors

Analogue audio is provided via these studio grade gold RCA connectors at 2.3V rms for connection to an external audio amplifier or AV system. Make sure that you use high quality audio cables to preserve the exceptional audio quality from the Overture 192, such as those available from our website (www.cantatis.com).

B. 3.5mm Headphone Socket

Connect your headphones directly to the Overture 192 to listen to music via the high quality on-board headphone amplifier. If your headphones have a 1/4" jack rather than a 3.5mm jack then you can purchase an adapter from our website (www.cantatis.com).

C. Front Panel Audio (FPA) Connector

If your computer has a front panel headphones socket then you can attach the internal cable to this connector so that you can plug your headphones into the front of your computer rather than the headphone socket on the Overture 192 card.

D. Optical S/PDIF Connector

Digital S/PDIF audio is provided via this optical connector for connection to a digital amplifier or AV system. Cables are available from our website (www.cantatis.com).

E. Electrical S/PDIF Connector

Digital S/PDIF audio is also provided via this RCA connector for connection to a digital amplifier or AV system. Cables are available from our website (www.cantatis.com).

F. PCI Connector

The PCI connector is the interface that the Overture 192 uses to communicate with your computer. This must be plugged into a suitable free PCI slot inside your computer (see section 2.2 below).

G. Expansion Ports

The three expansion ports are provided for connection to other Cantatis products. Please visit our website (www.cantatis.com) for information about new products and offers.

2 Installation

2.1 System Recommendation

2.1.1 Windows PC

It is recommended that your Windows PC has at least the following specification although there are no restrictions during the installation process.

- Intel Pentium III, AMD or compatible CPU
- At least 256Mbytes of RAM
- One available PCI slot
- CDROM drive
- Microsoft Windows® 98SE, 2000, XP or Vista

Note that there is a separate Windows Vista User Guide to make installation and use straightforward for Windows Vista users. If you are using Windows Vista then please see the Cantatis Overture 192 Windows Vista User Guide.

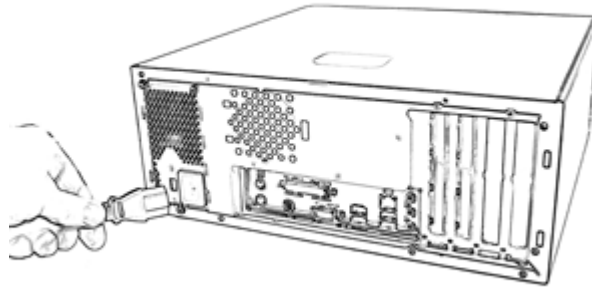
2.1.2 Other Systems

Check the Cantatis website (www.cantatis.com) for updates on how to use your Overture 192 on systems that are not running Microsoft Windows.

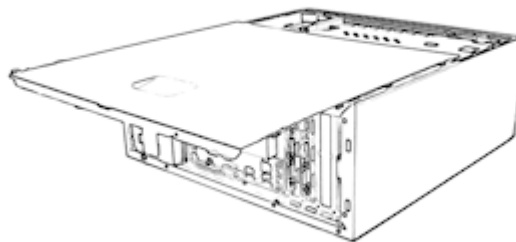
2.2 Hardware Installation

The following instructions describe a typical installation in a standard personal computer. Your experience of installing the Overture 192 might vary slightly from these instructions but the general process should be the same.

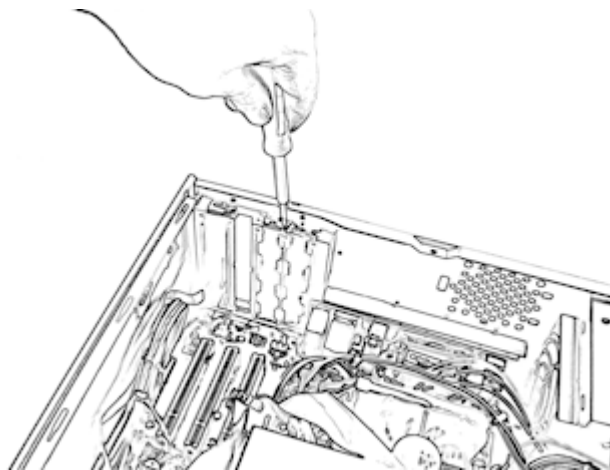
1. Switch off your computer and remove the power cable from your computer power supply.



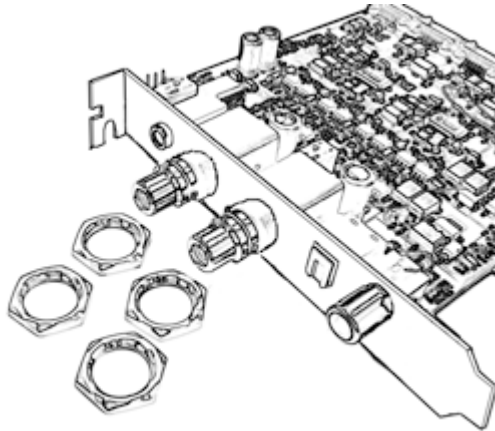
2. Remove the cover from your system following the instructions provided when you purchased your computer, so that you have access to the inside of the computer and the PCI slots.



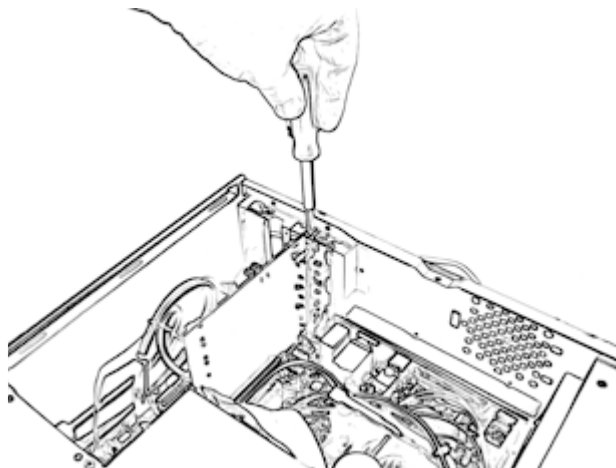
3. Identify the first available PCI slot in your system and if there is a blanking plate present in the slot then remove it using a suitable screwdriver.



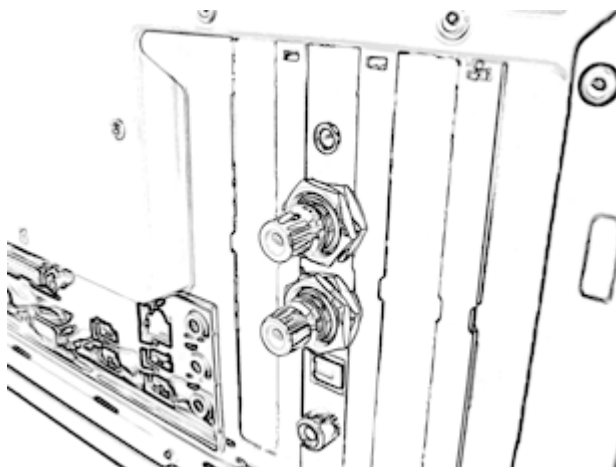
4. Remove all four of the nuts from both audio connectors on the Overture 192 Audio Interface card.



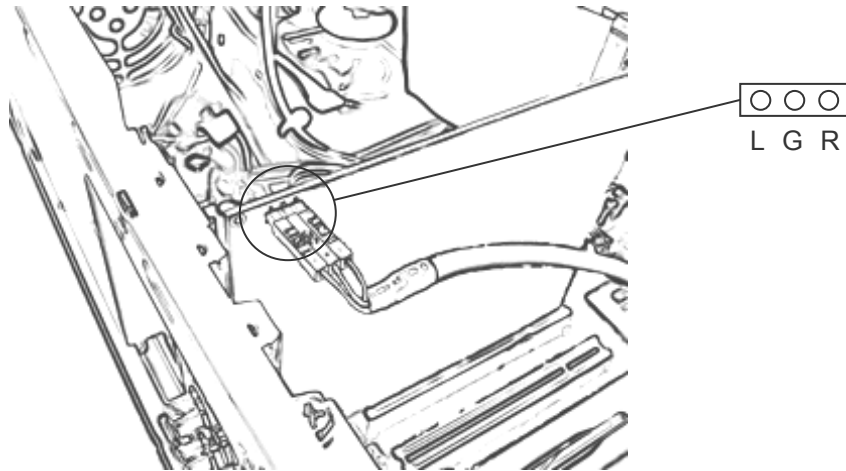
5. Insert the Overture 192 card into the PCI slot carefully and push the card firmly until it is seated securely, then screw the Overture 192 bracket to the chassis of your computer.



6. Screw the washers and four nuts back onto the audio connectors at the rear of your computer being careful not to over-tighten.



7. If your computer has a front panel headphone socket then unplug the front panel audio cable from your motherboard and plug it onto the connector marked FPA on the Overture 192 card (check left and right are the correct way round and ground is connected).

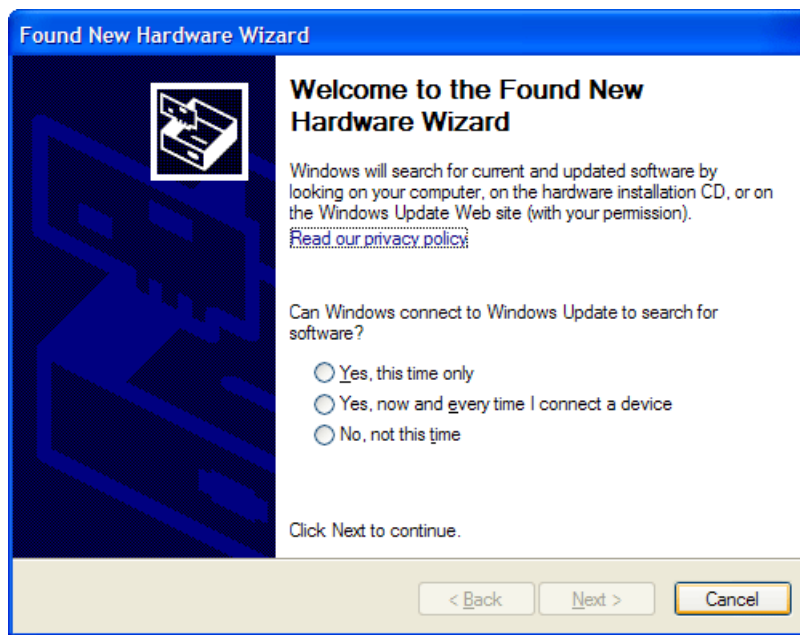


8. Replace the cover on your system, reconnect it to the mains power and switch it on. When the computer has started up then log on as usual.

2.3 Software Installation

2.3.1 Windows XP

When you log on to Windows XP, you may see the Windows Found New Hardware Wizard:



If this window appears then **do not** attempt to install the software using the wizard. The software must be installed from the CD that was provided with your Overture 192 so click on "Cancel".

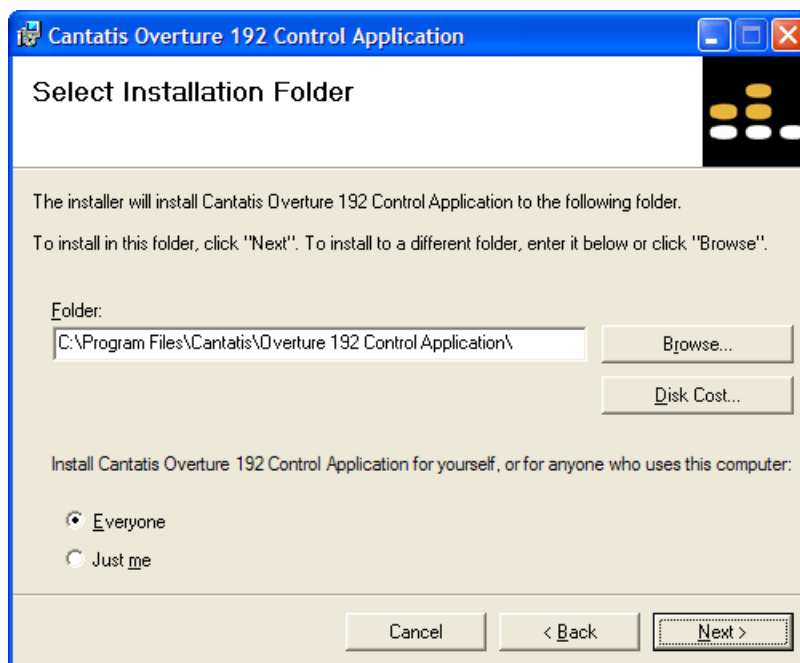
Insert the Overture 192 software CD into the CD drive of your computer and wait for the installation program to start (if it doesn't start automatically then run the Setup.exe program on the CD manually).

The Overture 192 Control Application Installer will then start:



Click on "Next >" to start the installation.

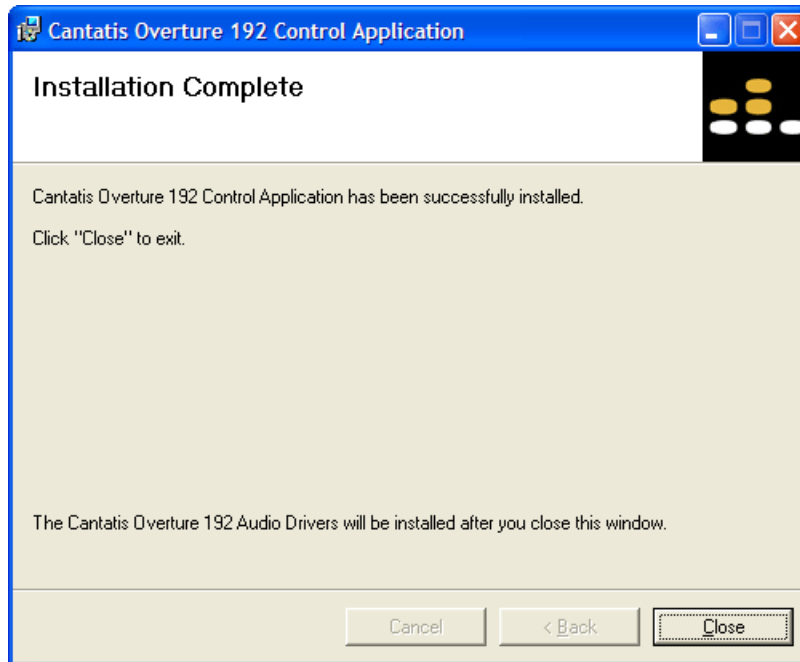
You will then be asked to confirm or modify the location to install the application and whether you want to install the software for everyone that uses your computer or just you:



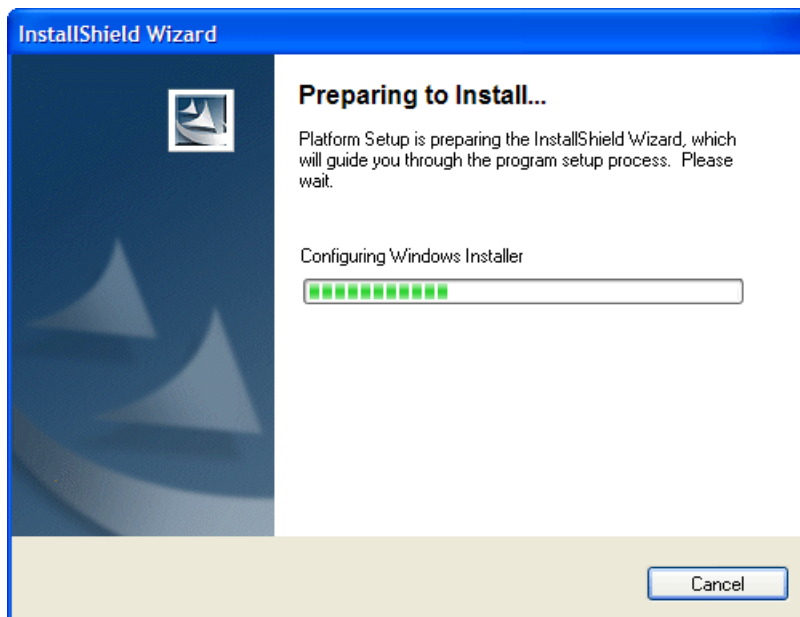
It is normal just to leave these at the suggested settings but you can modify them if you want to.

Then just click “Next >” to start and you will see the progress of the installation.

When the Overture 192 Control Application has been installed you will see the following window:



When you click on “Close” to close this window the Overture 192 Driver Installer will start automatically using the InstallShield Wizard (this provides protection for your installation and ensures that the driver software can be uninstalled cleanly should you wish to do so in future):



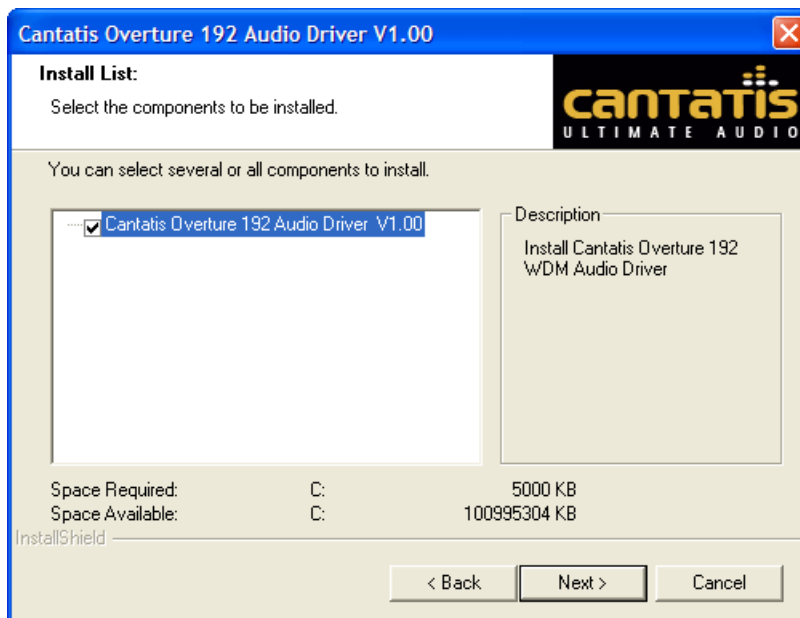
When the InstallShield Wizard has finished its preparations then the driver installer will start:



Click on "Next >" to start installing the Overture 192 driver.

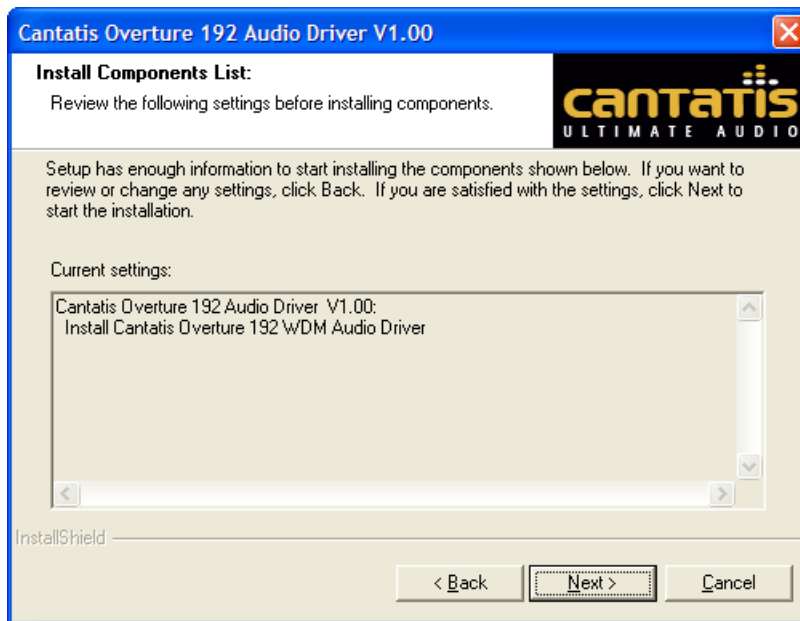
A license agreement window will be displayed that shows the license that is granted for you to use the driver software. Read the text then select the "I Agree" option and then click on "Next >" to continue.

You will then be asked to confirm that you wish to install the driver:



Make sure the "Cantatis Overture 192 Audio Driver V1.00" item is ticked and then click on "Next >" to continue.

You will then be asked to make a final confirmation that you want to install the driver:



If you want to review any of the previous windows to check your settings then you can use the “< Back” button, otherwise click on “Next >” to proceed with the installation.

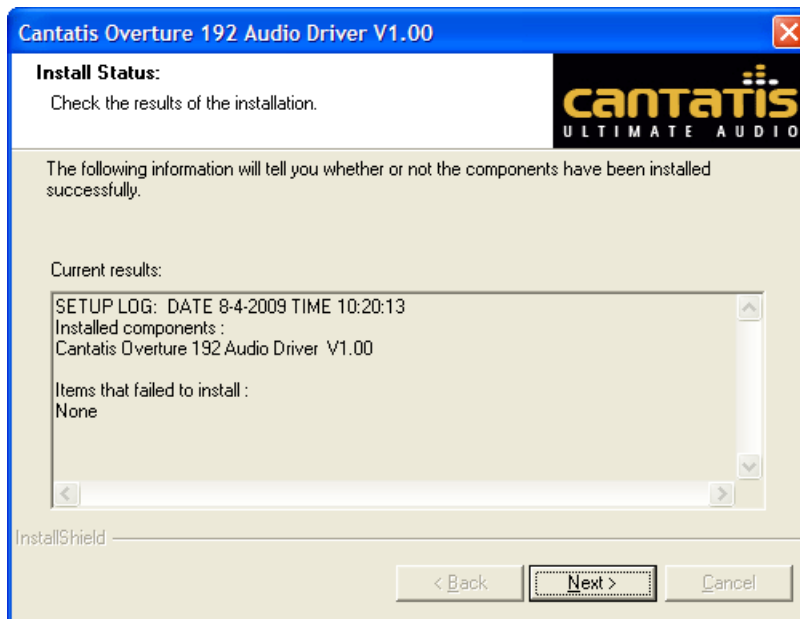
The Overture 192 driver will then be installed.

During the driver installation you might see the following window:



This is normal with drivers that have not been created by Microsoft so there is no need to worry as we have tested the Overture 192 drivers thoroughly. Just click on “Continue Anyway” to proceed with the installation.

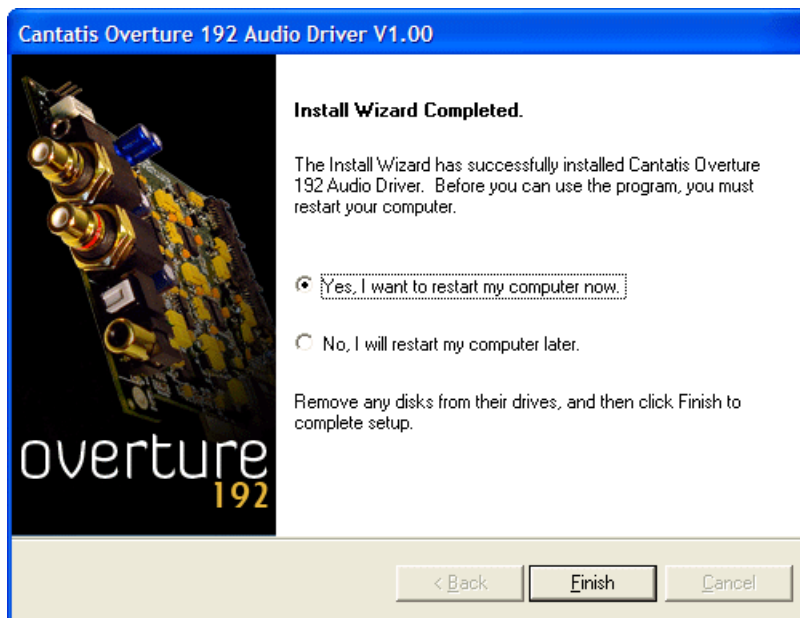
When the driver installation process has finished you will see the following window:



The text should appear as above, stating that the items that failed to install were “None” i.e. there were no components that failed to install.

If anything other than “None” is shown then you should contact our support team via the Cantatis website (www.cantatis.com).

Click on “Next >” and you will be prompted to restart your computer:



Remove the Overture 192 installation CD from your CD drive and then click on “Finish” to restart your computer so that that the driver starts up properly and is ready to use.

2.3.2 Older Versions of Windows

Installing the software on older versions of Microsoft Windows should be very similar to the process described above for Windows XP.

If you have any problems with your installation then please contact our support team via the Cantatis website (www.cantatis.com).

3 Overture 192 Control Application

3.1 Fundamentals

When we designed the Overture 192 Audio Output Interface one of the fundamental objectives was to keep it simple to install and simple to use.

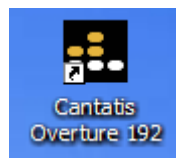
So, no bundles of cables hanging out of the back of your computer and no complicated control applications with volume controls, graphic equalisers and dynamic effects that can all be achieved by using the operating system and applications on your computer anyway.

Instead, the Overture 192 Control Application simply focuses on the essentials.

Note that in this section we discuss the “sample rate”, which is partly what determines the “quality” of the sound, the higher the sample rate the better the quality. Sample rate is normally measured in “kHz” (pronounced “kilo-hertz”) which means “thousands of samples per second” e.g. 96kHz means 96 thousand samples per second. A “sample” is a “snapshot” of audio taken at a particular instant of time so the more samples there are the more of the original sound can be reproduced.

3.2 Starting Up

After you have logged onto your PC you will find a shortcut to the Overture 192 Control Application on your desktop, which you can double click to start the application:

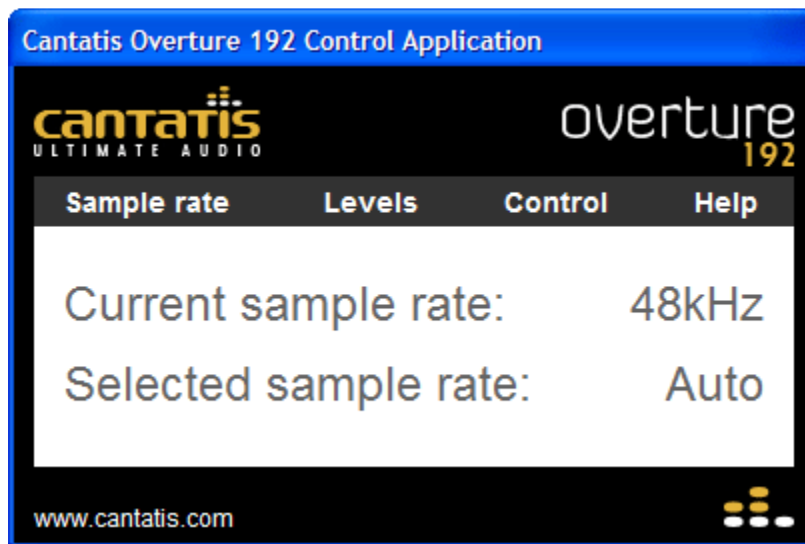


Tip: If you don't want the Overture 192 shortcut on your desktop then it is safe to delete it.

You will also find the Overture 192 Control Application in the “Cantatis” group in the “All Programs” menu in your Start menu:



When the application starts up you will see the following window:



This window is used to control the Overture 192 Audio Output Interface.

Tip: You can click on the “www.cantatis.com” link at any time to go directly to the Cantatis website to find out about all of the latest products and offers or to get help and support.

3.3 System Tray Icon

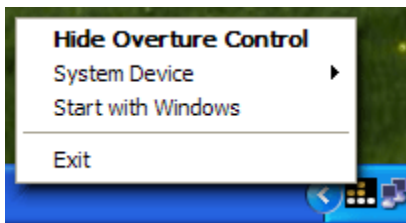
When the Overture 192 Control Application starts up it also places an icon in the Windows system tray:



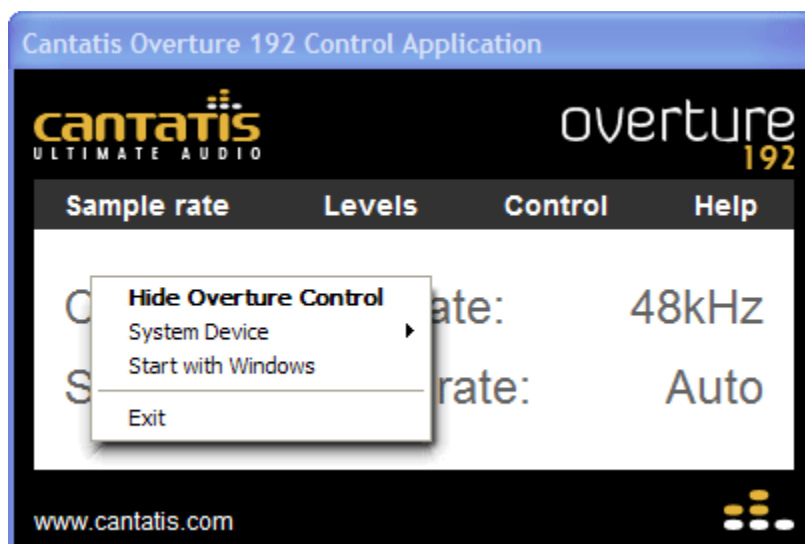
Tip: By clicking on this icon with the left button of your mouse you can hide or show the Overture 192 Control Application window.

3.4 Popup Menu

The system tray icon also has a popup menu, which you can see when you click on the icon with the right button of your mouse:



This popup menu is also available by clicking with the right mouse button on the Overture 192 Control Application window:

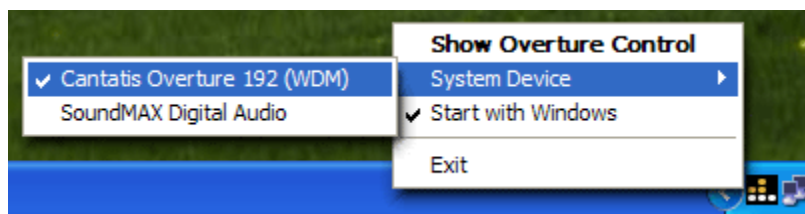


3.4.1 Show / Hide Overture Control

The popup menu also has a means to hide or show the Overture 192 Control Application window (as well as by simply clicking on the system tray icon). This is in bold text because it is the default action that is taken when you simply click on the system tray icon.

3.4.2 System Device Submenu

On Windows XP there is a “System Device” submenu that provides a quick and easy way to select the current default sound playback device:

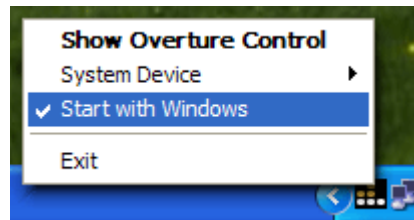


You would normally have to go to the “Audio” tab of the Windows XP “Sounds and Audio Devices Properties” panel to change the current default sound playback device but this submenu provides a convenient and quick shortcut method.

Tip: Use the “System Device” submenu to select the desired audio output device before starting up an audio application such as iTunes so that the application uses the audio output you want it to play to. After starting up the application you can use the menu again to set the default playback audio device back to your on-board audio so that Windows system sounds don’t interfere with listening to your music.

3.4.3 Start with Windows

If you select the “Start with Windows” menu option then the menu item will be ticked and the Overture 192 Control Application will put a shortcut in the “Startup” group of the “All Programs” menu in your Start menu so that the application is started automatically when you log onto Windows:

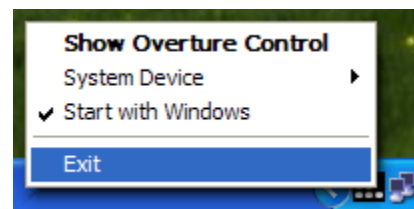


When the application starts automatically when you log on it will be shown briefly and will then hide itself automatically. You can show the Overture 192 Control Application window again by clicking on the system tray icon or using the popup menu.

If you select the “Start with Windows” menu option when it is ticked then the tick will disappear and the “Startup” shortcut will be removed so that the application will no longer start up when you log on.

3.4.4 Exit

The Overture 192 Control Application popup menu also provides an “Exit” menu option for exiting the application:



3.5 Panels

The Overture 192 Control Application window provides access to four “panels” that allow you to do different things:

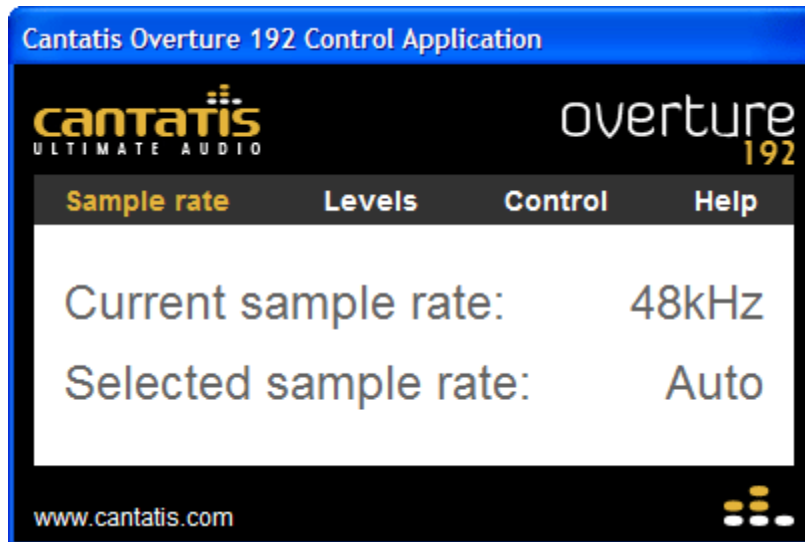
Sample rate	Allows you to control the audio playback sample rate.
Levels	Allows you to view and test the audio levels.
Control	Allows you to control Overture 192 features.
Help	Provides application version and access to help information.

These panels are selected by moving your mouse pointer over the panel name so that the name turns from white to gold and then clicking with your left mouse button.

The selected panel will then be displayed.

3.5.1 Sample Rate Panel

The “Sample rate” panel allows you to control the audio playback sample rate used by the Overture 192 Audio Output Interface:

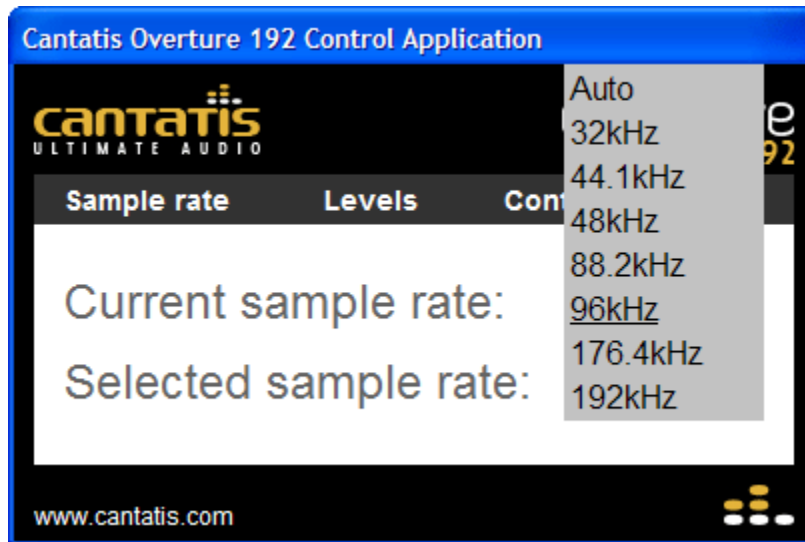


The panel shows the “Current sample rate” that the Overture 192 is playing at (if there is nothing playing then this will show the sample rate that was last played).

It also shows the “Selected sample rate”. This is set to “Auto” by default, which means that the Overture 192 will automatically play at the same sample rate as the music or audio clip that is played. For example, this means that CDs (which are recorded at 44.1kHz sample rate) that are ripped to your PC will play at 44.1kHz and equally, very high quality downloaded music files recorded at 192kHz will play at 192kHz without you having to change any settings.

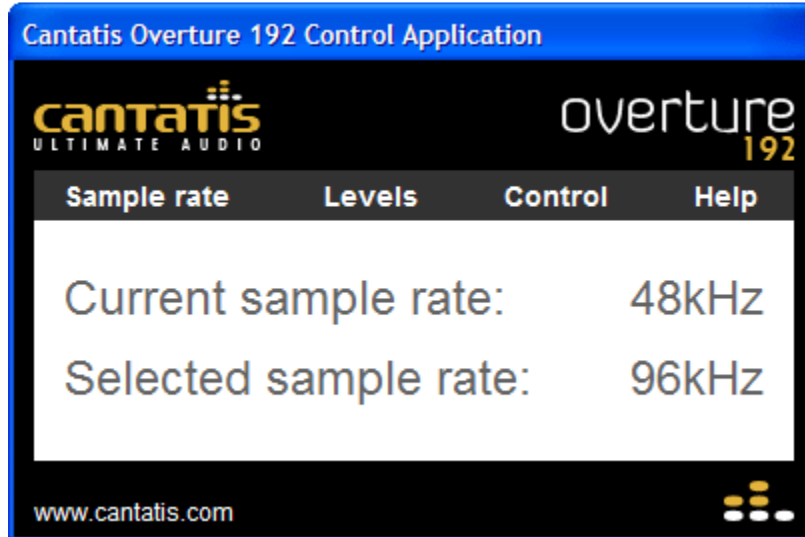
If you are using the analogue RCA outputs of the Overture 192 and you are not using the digital S/PDIF outputs then you can leave this set to “Auto” so that you play exactly what was recorded.

However, if you want to set the Overture 192 to operate at a specific sample rate then you can move your mouse pointer over the existing “Selected sample rate” until it turns from white to gold and then click with your left mouse button to display the sample rate menu:

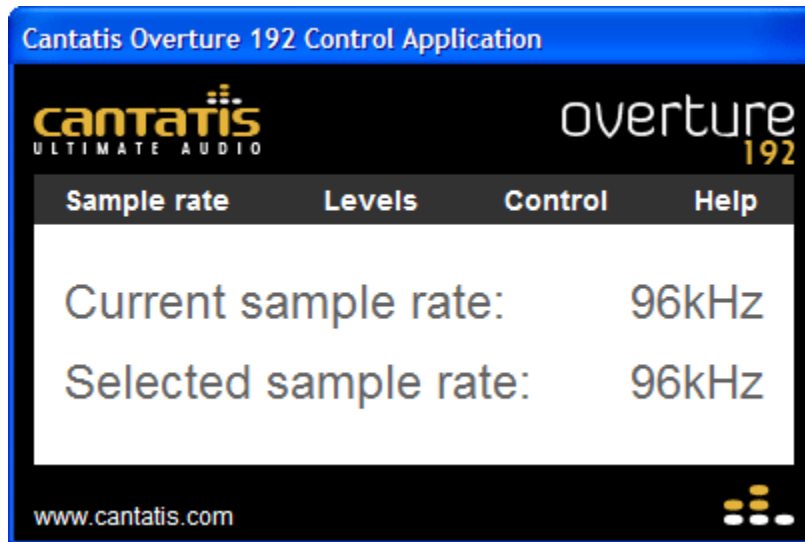


You can then use your mouse to highlight the sample rate you want and click with your left mouse button to set it.

Note that the “Current sample rate” will not change immediately:



The “Current sample rate” will only change to reflect the new setting when you next start some audio playing (this is the case even if you are already playing audio when you change the sample rate):



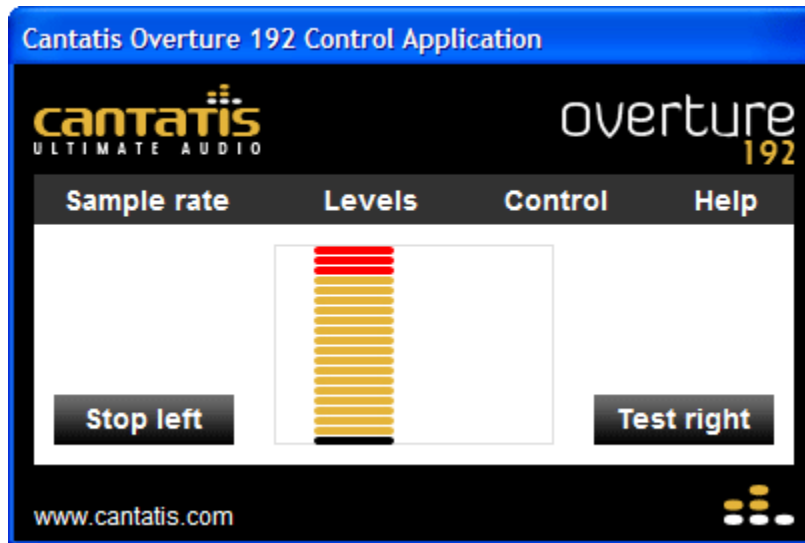
After you have changed the sample rate to a fixed value, all music and audio clips will be played at your selected sample rate, so any music recorded at a lower rate will be “up-sampled” and any music recorded at a higher rate will be “down-sampled”.

Tip: If you are using the digital outputs of the Overture 192 then you might want to set the “Selected sample rate” to the maximum sample rate supported by your digital receiver (typically 48kHz or 96kHz). This will ensure that you always play at a sample rate that your digital receiver will understand and you will never end up in the situation where you are playing audio that your digital receiver will not be able to play.

3.5.2 Levels Panel

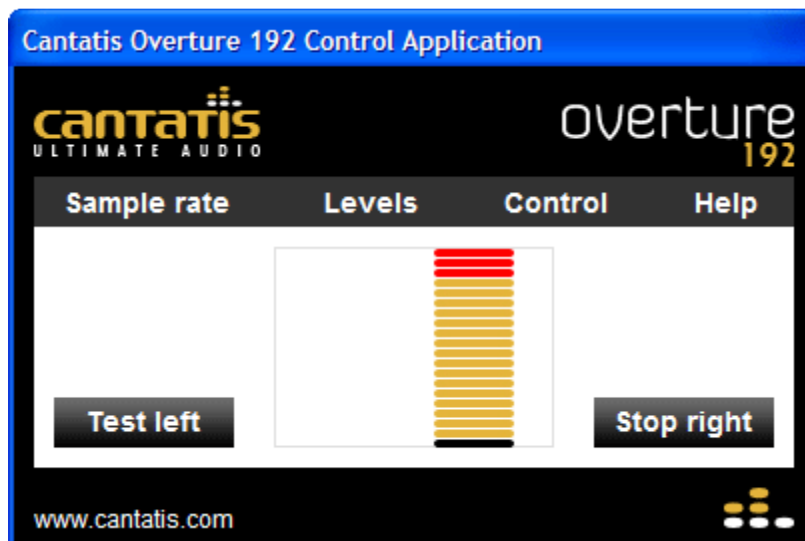
The “Levels” panel allows you to view the audio levels playing out of the left and right channels of the Overture 192.

When you are setting up your system you can also click on the “Test left” button to play a test tone on the left channel:



The button text will change to “Stop left” and if you click on the button again then the test tone will stop playing.

Or you can use the “Test right” button to play a test tone on the right channel:



Again, clicking on the same button will stop the test tone playing.

3.5.3 Control Panel

The “Control” panel allows you to control some of the features of the Overture 192.

Ticking the “Mute all outputs” option turns off audio output on both the analogue “line” outputs and also the headphone output:



Ticking the “Disable line outputs” option turns off the analogue RCA outputs:



Note that this is performed by turning on and off the hardware “relay” circuits so when you tick or un-tick this option you will hear a small click from the Overture 192 – this is normal and is nothing to worry about!

Ticking the “Disable headphone output” option turns off the headphone output:



Again, you might hear a small click from the Overture 192 when you tick or un-tick this option.

Tip: You can leave your headphones plugged into the Overture 192 headphone jack at the rear of your computer and just disable the headphone output using this tick box to avoid hearing audio from your headphones at the same time you are listening to music playing from the Overture 192 through your Hi-Fi system.

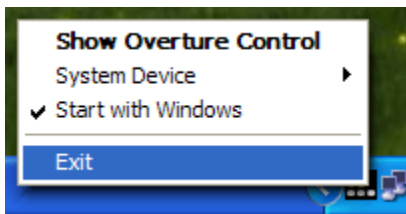
3.5.4 Help Panel

The “Help” panel provides application version information and a convenient link to the Cantatis website where you can find further information about the Overture 192, other Cantatis products, Frequently Asked Questions etc:



3.6 Uninstalling

If you find that you don't need to use the Overture 192 Control Application and you want to uninstall it then you should exit the application using the "Exit" option on the popup menu:



Then use the "Uninstall Overture 192 Control Application" shortcut in the Cantatis group in your Start menu:



This will uninstall the Overture 192 Control Application from your system but will leave the Overture 192 drivers intact so that the Overture 192 Audio Output Interface continues to operate as required.

4 Making the Most of the Overture 192

4.1 Cables

Your Overture 192 Audio Output Interface provides you with one of the highest quality audio outputs available for your computer.

It would be a shame to compromise that quality of sound after it leaves your computer; therefore we recommend that you use very high quality audio cables to get the Overture 192 sound to your Hi-Fi or AV system without any loss of quality.

We provide a wide range of cables and adapters on our website (www.cantatis.com) that have been specially selected to operate with the Overture 192 so please visit our site and browse round the shop to find what you need.

4.2 Music Player Applications

Whatever application you prefer to use for playback of your digital music, the Overture 192 provides you with exceptional audio quality. Whether you use Windows Media Player, iTunes, WinAmp or another music player you can be confident that your music will be reproduced faithfully and with the utmost detail and clarity.

To get the latest tips and tricks for using the Overture 192 with your favourite music player application please visit the support area of our website (www.cantatis.com) and check the Frequently Asked Questions list.

4.3 ASIO Compatibility

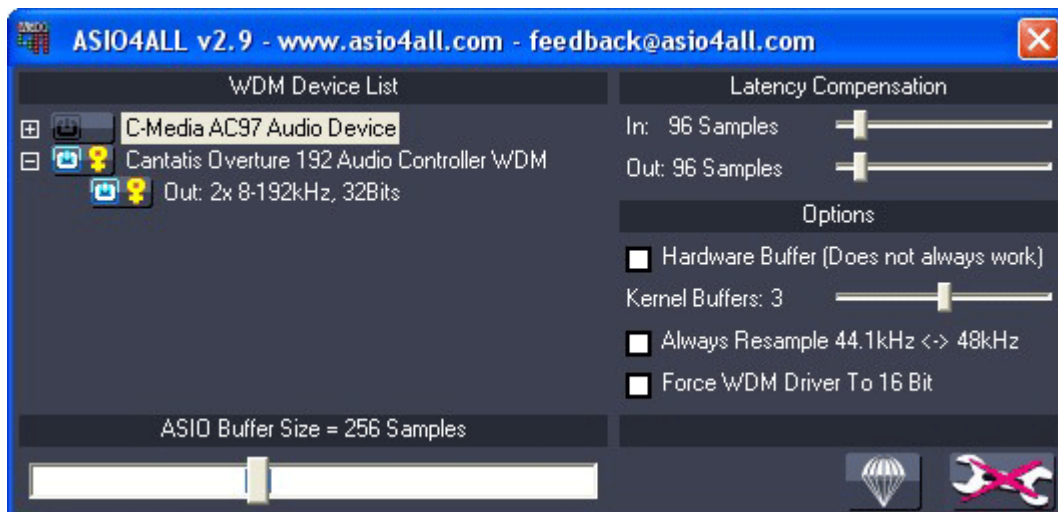
The Audio Stream Input/Output (ASIO) architecture addresses the needs a professional audio recording solution might have. Created and trademarked by Steinberg Media Technologies GmbH, it does this by supporting variable bit depths and sample rates, multi-channel operation and synchronization. As a result, the user gets low latency, high performance, easy set up and stable audio recording across a variety of high-end software applications, particularly those that are compatible with Virtual Studio Technology (VST).

With ASIO, the entire audio system becomes deterministic, controllable and offers complete and immediate access to the audio system's capabilities. Since its introduction, ASIO (and now ASIO2) has become a supported standard by many leading audio hardware manufacturers.

As the Cantatis Overture 192 utilises standard WDM driver design techniques, it is fully compatible with a wide variety of 3rd party ASIO drivers to allow ultra low latency for those who need it, particularly for musicians who rely heavily on software synthesis.

Take the scenario of a keyboard player using a controller keyboard over MIDI to their computer running a software synthesiser. Hit a note on the keyboard and the sounds needs to happen FAST. A delay of a mere tenth of a second can render the system utterly unusable, especially where you are playing fast - you can easily play 20 notes in a second - and it's useless if the audio happens with a 3-4-5 note delay.

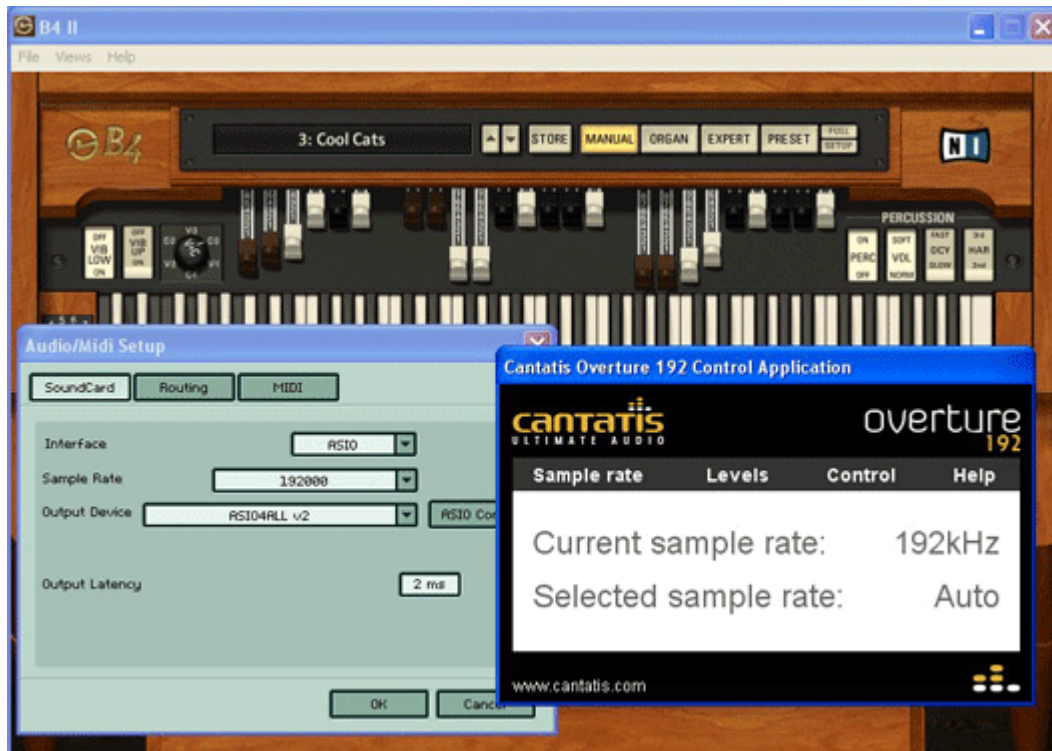
Arguably, the most popular 3rd party ASIO driver comes from Michael Tippach (<http://www.asio4all.com>):



ASIO4ALL is a hardware independent low latency ASIO driver for WDM audio devices. It uses WDM Kernel-Streaming to achieve its objectives, bypassing the plethora of software layers more normally found in an operating system.

ASIO4ALL allows the Overture 192 to achieve some quite remarkably low latency figures – measured in audio samples rather than seconds.

On a powerful computer, and when higher sample rates are selected, we've been very successful in reliably achieving great results. With a lower sampling rate of 44.1kHz and even with a big buffer size of, say, 256 samples, the delay through the Audio output device can be a mere 5 thousandths of a second! After a few tweaks of the settings, 2 milliseconds can very often be achieved:



Perfect for all budding Rick Wakemans everywhere!

For more information about using the Overture 192 with software synthesiser applications and computer generated music please visit our website (www.cantatis.com).

5 Notes

All specifications are subject to change without prior notice.

Microsoft and Windows® are registered trademarks of Microsoft Corporation. Other product and brand names are trademarks of their respective owners.

Copyright © Cantatis, 2009

www.cantatis.com